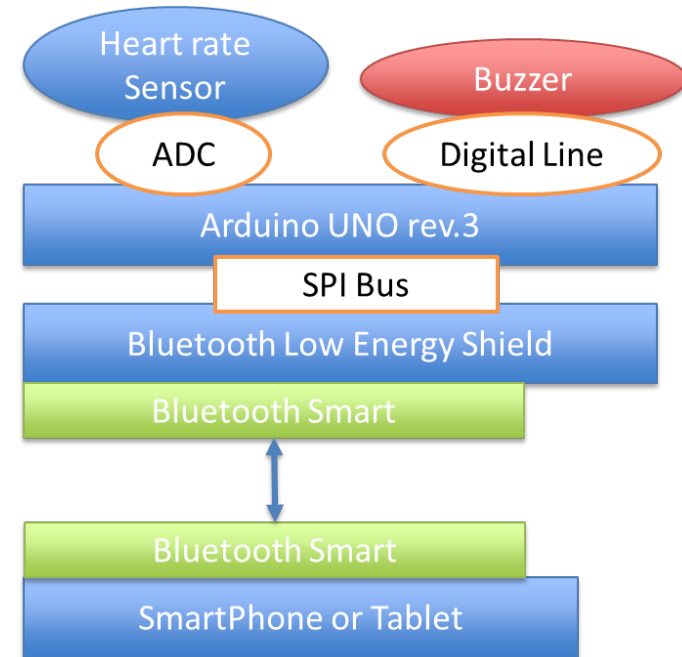
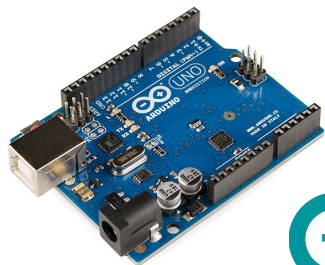


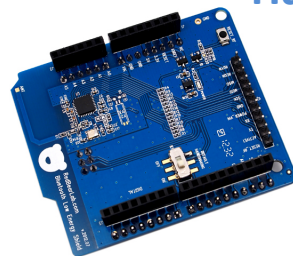
- The embedded system can be connected with sensors and/or actuators.
- The smart mobile device can be locally connected with the system.
- The acquired information is received by the smart mobile device and can be analyzed on it.
- The smart mobile device is capable of controlling the actuators.



## Hardware modules



Arduino UNO rev.3



Bluetooth Low Energy Shield



9 V power supply



Arduino UNO enclosure

# DESIGNING A BLUETOOTH SMART GADGET



## HOW TO

1. Download the Arduino IDE and the Arduino and iOS/Android library from the Red Bear Company (redbearlab.com).
2. Connect all the hardware modules.
3. Install the Arduino library on the Arduino IDE and select the most suitable example as a template for your project. Compile and upload the selected project on the Arduino.
4. Open the most suitable Android or iOS example. Modify it, if needed, and run it on a real device with Bluetooth Low Energy support (iPhone 4s or higher or another device, such as a Samsung Galaxy S3).
5. Verify that the system is properly working.

## commercial example



The environment affects us in so many ways, from how we feel through to how productive we are.

**Blue Maestro's Tempo™ Environment Monitor** is a powerful Bluetooth Smart sensor unit that is compatible with iOS and Android smartphones and tablets.

## EXTENSIONS

- Other sensors and actuators can be connected to the Arduino UNO + the Bluetooth Low Energy Shield.
- The Arduino UNO and the Bluetooth Low Energy Shield can be easily replaced by smaller versions that are available in [redbearlab.com](http://redbearlab.com).
- If the smart device is connected to Internet, the data can be stored in the cloud.

## Security

The communication is always secure and protected since the Bluetooth Core Specification provides several features to cover the encryption, trust, data integrity and privacy of the user's data.

## Scalability

Bluetooth Smart allows to control many devices at the same time. The App should be compatible with the gadget and it should be within the communication range.

## Portability

Bluetooth Smart defined in the Bluetooth Core Specification version 4.2 is a communication standard is being widely adopted by the manufactures when developing gadgets for smart devices.